

# Purchasing Managers Index of Puerto Rico Manufacturing

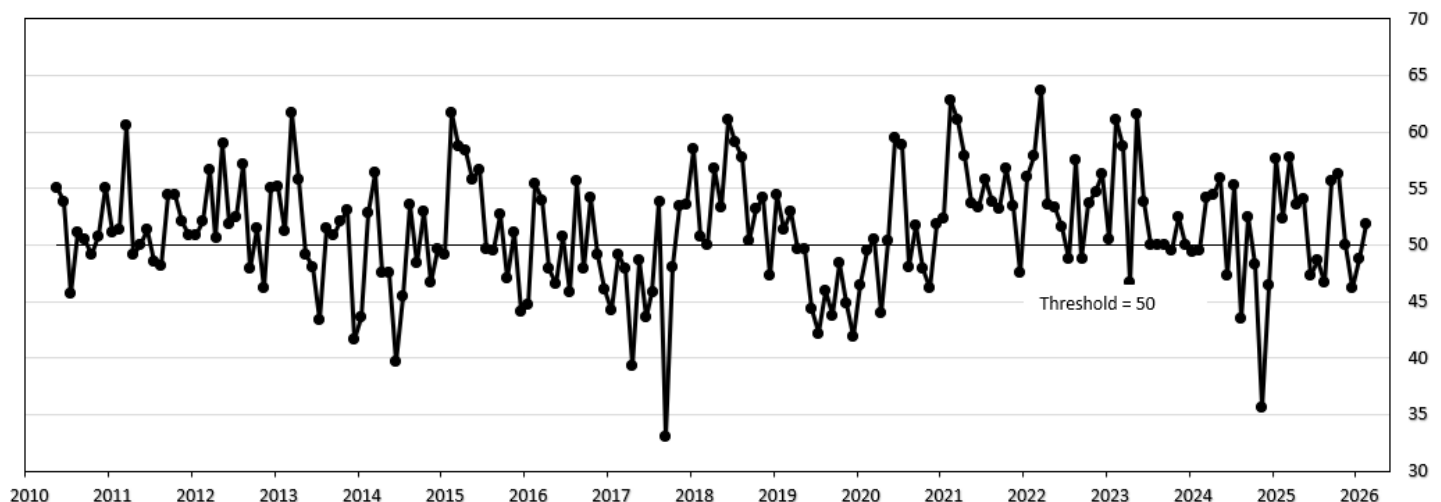
## FEBRUARY 2026



### PUERTO RICO MANUFACTURING PMI INCREASED TO 51.8 IN FEBRUARY

The Purchasing Managers Index (PMI) for Puerto Rico's manufacturing sector is a collaborative effort between the Puerto Rico Manufacturers Association and the Puerto Rico Institute of Statistics. The Purchasing Managers Index (PMI) for Puerto Rico's manufacturing sector increased to 51.8 in February 2026. A reading above the threshold of 50 suggests an expansion in the manufacturing sector with respect to the previous month. New orders, Production, Employment and Supplier deliveries increased with respect to the previous month and were at or above the threshold level of 50. In a supplemental survey of manufacturing establishments, the biggest challenges faced by companies during the past month were: operations (sales 33%, costs 33%, supply chain logistics 17%, supplier deliveries 17%, cost of materials 8%, quality of materials 8%), human resources (employment 8%, absenteeism 8%), and utilities (high energy costs 8%). The Puerto Rico Manufacturing-Purchasing Managers Index (PRM-PMI) has been at or above the threshold level in 117 of the 190 months since the survey was first undertaken.

**Puerto Rico Manufacturing – Purchasing Managers' Index (PRM-PMI)**



**Table 1. Puerto Rico Manufacturing – Purchasing Managers' Index: February 2026**

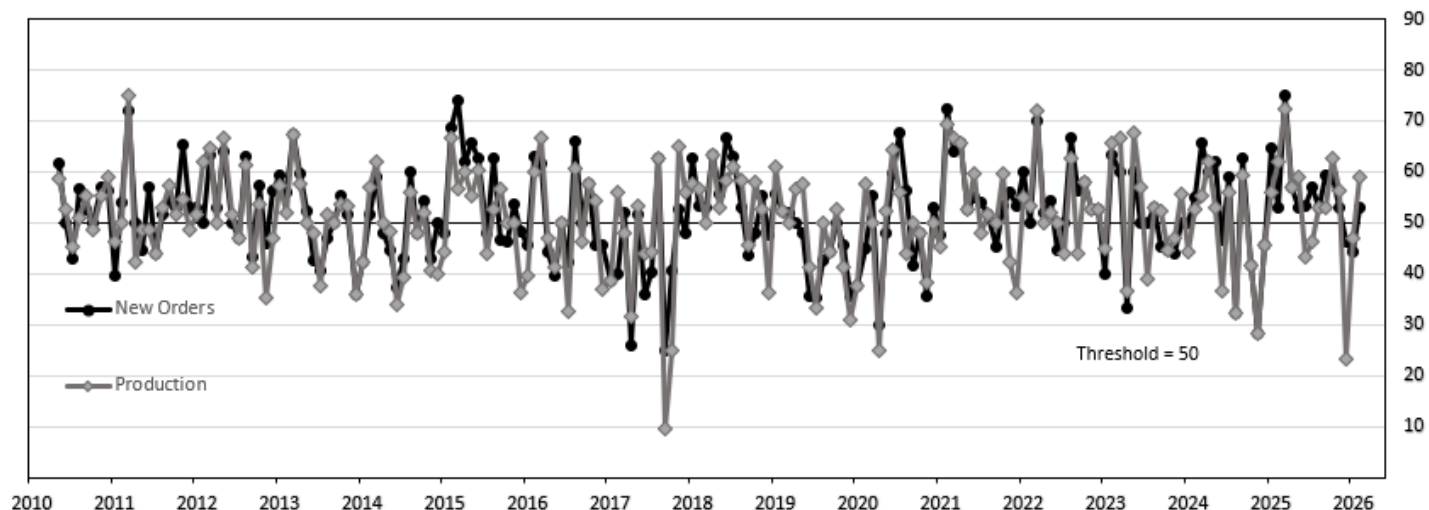
	Better	Same	Worse	Index		
New Orders	35.3	35.3	29.4	52.9	Higher	Órdenes nuevas
Production	35.3	47.1	17.6	58.8	Higher	Producción
Employment	11.8	76.5	11.8	50.0	Same	Empleo
Own Inventories	11.8	47.1	41.2	35.3	Lower	Inventarios de su empresa
Supplier Deliveries	23.5	76.5	0.0	61.8	Slower	Entregas de suplidores
Puerto Rico Manufacturing – Purchasing Managers Index				51.8	Expansion	

## New Orders

In February, the New Orders PMI increased to 52.9, after being below the threshold last month. A reading above 50 suggests that new orders at manufacturing establishments in February were higher than in January.

## Production

The Production PMI increased to 58.8 in February, after being below the threshold last month. A reading above 50 indicates that manufacturing production in February was higher than in January.

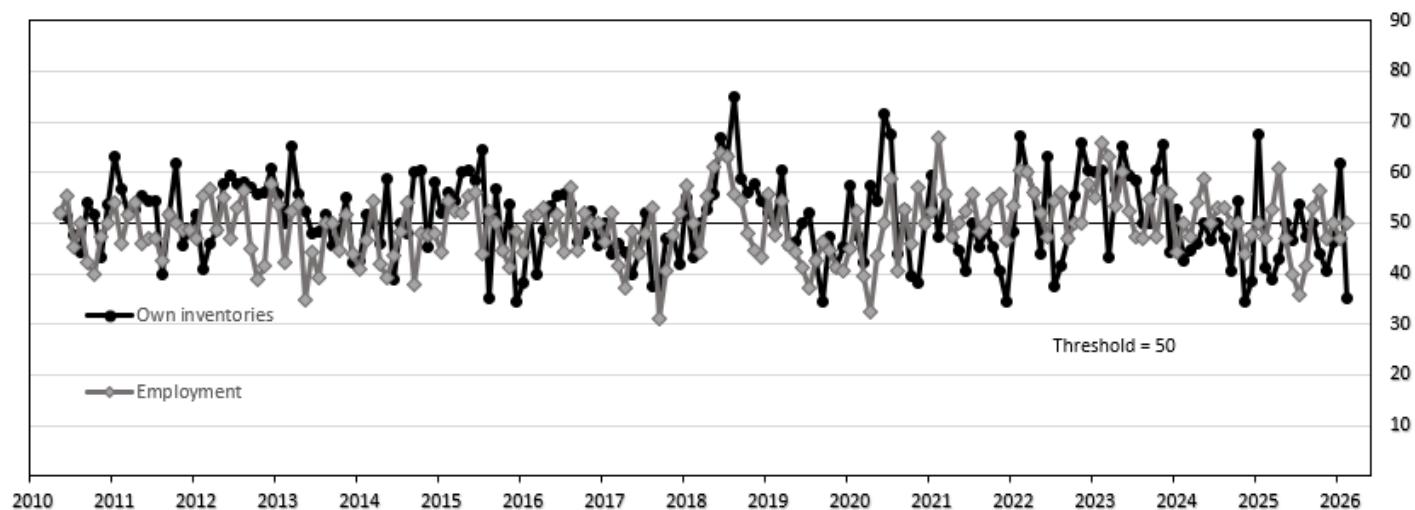


## Employment

In February, the Employment PMI increased to 50.0, after being below the threshold last month. A reading at 50 suggests that manufacturing employment in February was the same as in January.

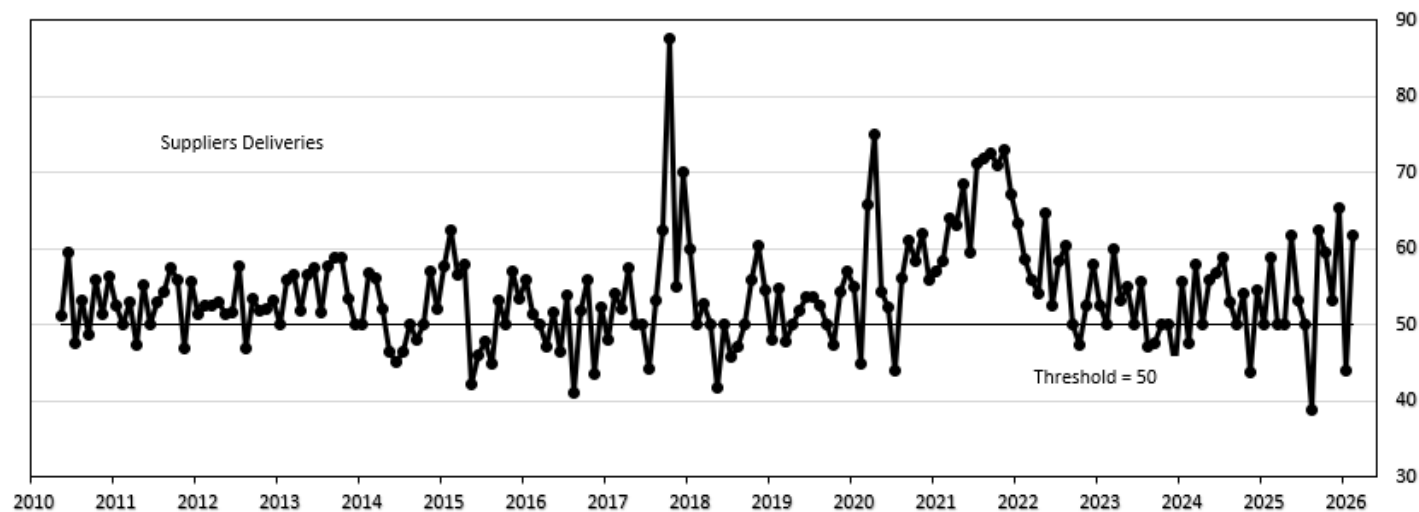
## Own Inventories

In February, the Own Inventories PMI decreased to 35.3, after being above the threshold last month. A reading below 50 indicates that inventories in manufacturing establishments in February were lower than in January.



Supplier Deliveries

The Supplier Deliveries PMI increased to 61.8 in February, after being below the threshold last month. A reading above 50 suggests that the speed of supplier deliveries in February was lower than in January.



## Methodological note

The Puerto Rico Manufacturing-Purchasing Managers Index (PRM-PMI) is the result of a collaborative project between the Puerto Rico Manufacturers Association and the Puerto Rico Institute of Statistics. The PRM-PMI measures short-term business conditions in Puerto Rico's manufacturing sector and provides a broad-based metric for the productive side of Puerto Rico's economy. The methodology is similar to PMI surveys conducted elsewhere. The survey questionnaire is available <https://www.estadisticas.pr.gov/encuestas/puerto-rico-manufacturing---purchasing-managers-index-prm-pmi>. The participants include manufacturing establishments with 50 or more employees. Currently, results are presented on a Non-Seasonally Adjusted (NSA) basis. The Puerto Rico Institute of Statistics conducted tests to assess the need for seasonal adjustment, and at present, the series does not require it.

The PRM-PMI is calculated as the simple average of 5 sub-indexes, representing different business conditions in manufacturing establishments: New Orders PMI, Production PMI, Employment PMI, Supplier Deliveries PMI, Own Inventories PMI. The sub-indexes are computed using a diffusion index methodology. Specifically, for any given month with respect to the previous month, participants are asked to answer whether the business condition of the establishment: (1) improved, (2) remained the same, or (3) deteriorated. Diffusion indexes are calculated as the percentage of responses that indicate the business condition improved plus half of the percentage of responses that indicate the business condition remained the same. Responses that indicate the business condition deteriorated are not taken into account in calculating diffusion indexes. The survey also includes questions on other business conditions. The diffusion indexes that correspond to these questions are currently under evaluation.

This report was prepared by the staff of the Puerto Rico Institute of Statistics and has not been evaluated by the Board of Directors of the Puerto Rico Institute of Statistics. The information contained in this report need not reflect the official opinion of the Board of Directors of the Puerto Rico Institute of Statistics. No warranty, express or implied, is attached to these figures. While the figures are compiled with professional care, no representations about appropriateness, accuracy, or suitability for specific applications are made.

## Contact information

Contact person: Dr. Ronald Hernández Maldonado, Statistical Project Manager; Leyda Inés Soto López, Statistical Project Assistant  
Addresses: Physical – 57 Quisqueya St., Suite 2000, San Juan, PR 00917; Postal – P.O. Box 195484, San Juan, PR 00919  
Telephones: Direct – (787) 819-0730; E-mail – [ronald.hernandez@estadisticas.pr](mailto:ronald.hernandez@estadisticas.pr) ; [leyda.soto@estadisticas.pr](mailto:leyda.soto@estadisticas.pr)

## To obtain a copy of this report

Visit at <https://www.estadisticas.pr.gov/encuestas/puerto-rico-manufacturing---purchasing-managers-index-prm-pmi> , (2) write your request at [preguntas@estadisticas.pr](mailto:preguntas@estadisticas.pr), (3) call (787) 819-0730, (4) mail your request to the Puerto Rico Institute of Statistics, P.O. Box 195484, San Juan, PR 00919, or (5) visit the offices of the Puerto Rico Institute of Statistics at 57 Quisqueya St., Suite 2000, San Juan, PR 00917, between the hours of 8:00 a.m. and 5:30 p.m. The report is available on paper and in the following electronic formats: pdf and Microsoft Excel. The report is free.

## Publication calendar

The monthly PRM-PMI is reported on the first business day of the month. In specific, the table below shows the expected publication dates of the PRM-PMI report during calendar year 2026:

Reference month	Publication date
Jan-26	March 3, 2026
Feb-26	April 1, 2026
Mar-26	May 1, 2026
Apr-26	June 1, 2026
May-26	July 1, 2026
Jun-26	August 3, 2026
Jul-26	September 1, 2026
Aug-26	October 1, 2026
Sep-26	November 2, 2026
Oct-26	December 1, 2026